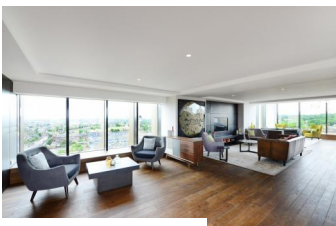


Vantage Point - 2 Bedroom 2 Bath Apartment, N19

Price on Application



Hampstead Office 2 Fleet Road, NW3 2QS
Call: 020 7482 4282 | Email:

DESCRIPTION

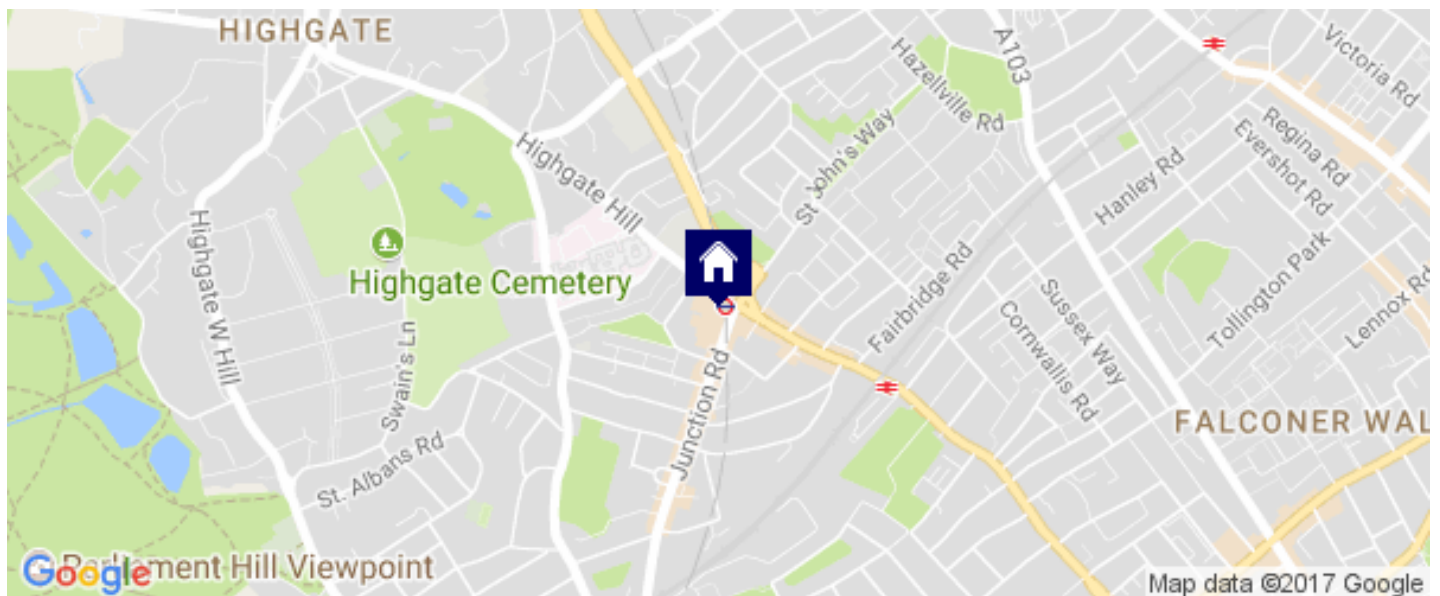
A fantastically high-end 2 bedroom apartment in this ground-breaking new development at the bottom of Highgate Hill and moments from Archway underground tube station (northern Line). Living in Vantage Point you will not only benefit from a bespoke interior designed apartment you will also gain 7,000 sqft of luxurious social space with the 16th and 17th floor penthouse spaces being an integral part. The development is built with quality and style at the forefront with the aim of the entire property being a home for its residents offering a lifestyle rather than just a place to live. 2 Bedroom 2 Bathroom apartments start from £810pw.

FEATURES INCLUDE

- * Fabulous views across London
- * On-site residents team
- * No Fees to Tenants
- * 45MB Wi-Fi Included
- * 1 minute walk to Archway Underground Station
- * Well connected by bus routes to the city, West End and Highgate
- * Zone 2 – Northern Line
- * Prices from £810 PW / £3,510 PCM

EPC

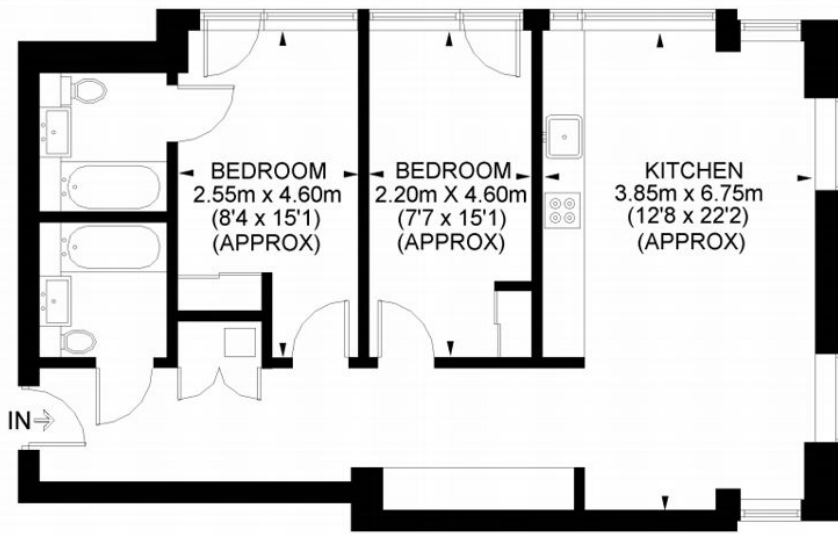
LOCATION MAP



Hampstead Office 2 Fleet Road, NW3 2QS
Call: 020 7482 4282 | Email:

FLOOR PLAN

Vantage Point, Junction Road, N19



THIS PLAN IS INDICATIVE OF THE TYPE OF PROPERTIES WITHIN THIS DEVELOPMENT

THIS PLAN HAS BEEN DRAWN FROM SUPPLIED PLANS, STRICTLY FOR USE AS A GUIDE ONLY
APPROXIMATE GROSS INTERNAL AREA
912 SQ. FT. (84.7 SQ. M.)

This plan is for layout guidance only. Not drawn to scale unless stated. Windows and door openings are approximate. Whilst every care is taken in the preparation of this plan, please check all dimensions, shapes and compass bearings before making any decisions reliant upon them. Please be advised that Hamptons International / our agents have not seen or reviewed any building regulations or planning permission in relation to works carried out to the property (ID264834)



Hampstead Office 2 Fleet Road, NW3 2QS
Call: 020 7482 4282 | Email: